

# Riverside Estates Suffolk

5059 Riverfront Drive, 23434 | Homesite 18

## Sales Price

\$485,559



Photo of similar model

**Under  
Construction!**

Approximate  
Aug/Sept delivery!

\$7,500 Closing Cost  
Assistance with  
Preferred Lender!



## 5 BR / 3 BA | 2,469 SF AVAILABLE!

The Galiano

- Craftsman elevation, Hardie siding with Board & Batten accents; partial Brick garage front
- Open floor plan with flex space
- 1<sup>st</sup> Floor Bedroom/Office
- Micro Office; Loft
- Full Bath down
- Gourmet kitchen with stainless appliances, slide-in gas range with chimney hood
- Upgraded cabinets throughout; soft close doors
- Kitchen quartz counter tops; Tile backsplash; Farm sink
- Craftsman fireplace
- Custom built-ins in Family and Mudroom
- Primary Bath Tile floor & shower
- Tile floor Hall bath and laundry
- Upgraded Flooring throughout
- Two tone paint package
- 2 year systems, 10 year structural warranty (2-10 HBW Program)
- One year builder warranty

## COMMUNITY HIGHLIGHTS

### Riverside Estates

- Flexible floor plans, 4 - 6 Bedrooms
- 2,300 - 3,801 Square Feet
- Waterfront Access to Nansemond River on select lots
- Located in established community with mature landscaping
- Obici Hospital nearby
- Granite or Quartz in Kitchen & Primary Bath
- Stainless Steel Appliances
- **Ashdon Energy Advantage**
- **HERS rated home by third party inspector for quality control**
- **2-10 Home Buyers Warranty**

**Site Manager:**

**Jamie Roser 757-404-6636**

[jamie@ashdonbuilders.com](mailto:jamie@ashdonbuilders.com)

*Ashdon*  
**BUILDERS**  
It's About Living

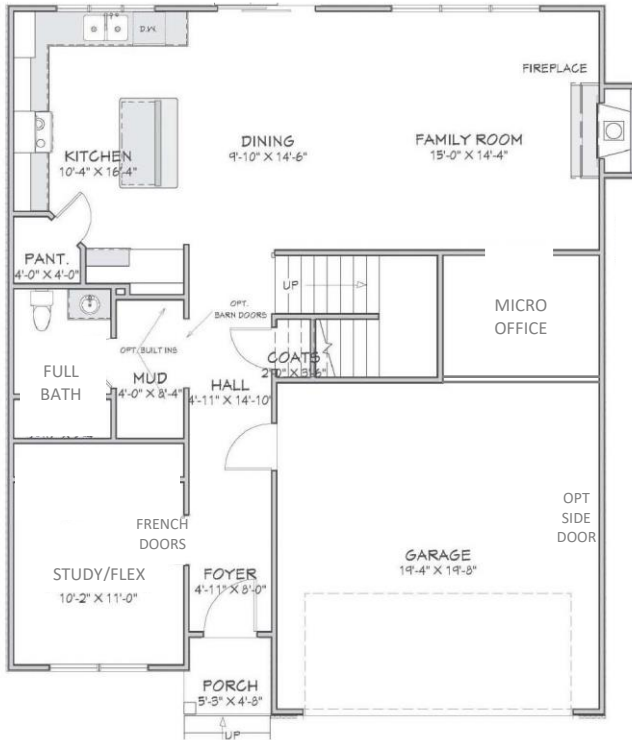
[ashdonbuilders.com](http://ashdonbuilders.com)

05/20/21

# Riverside Estates Suffolk

5059 Riverfront Drive, 23434 | Homesite 18

## Sales Price \$485,559



FIRST FLOOR



SECOND FLOOR

### Site Manager:

**Jamie Roser**

757-404-6636

[jamie@ashdonbuilders.com](mailto:jamie@ashdonbuilders.com)

### Site Assistant:

Karen Darden

757-639-3354

[karen@ashdonbuilders.com](mailto:karen@ashdonbuilders.com)



[ashdonbuilders.com](http://ashdonbuilders.com)



Builder reserves the right to substitute or make changes in all model types, prices, site plans, floor plans, materials and/or specifications: they are subject to change without notice. Actual home may vary from the renderings and floor plan, the model or other homes. Please see the Site Manager or Site Assistant for details. 6/2019