

# Holland Meadows Windsor, VA

25278 Kelsie Street, 23487 | Homesite 55

## Sales Price \$319,900\*



**\*\$15,590 Free options included in sales price!**

**\$5k Closing Cost Assistance with Preferred Lender!**



## 4 BR / 3 BA | 2,000 SF MOVE-IN READY!

Shelton Farm Ranch Model

- Open floor plan with Master down
- Rear covered porch
- ROG 4<sup>th</sup> Bedroom with full Bath
- Micro Office with barn door and custom built in desk
- Kitchen Granite countertops with tile backsplash
- Stainless Steel appliances
- Master Bath quartz counter tops
- Master Bath tile floor
- Master Bath tile shower; fiberglass base
- LVP flooring select locations
- Upgraded carpet padding
- Upgraded cabinets kitchen and baths
- Additional sink in hall bath
- Family room electric fireplace
- Custom built-ins in mud room
- Two tone paint throughout
- RG6/Cat 5; Family and all bedrooms
- 2 year systems, 10 year structural warranty (2-10 HBW Program)
- One year builder warranty

08/07/20

## COMMUNITY HIGHLIGHTS

Holland Meadows  
Phase 2

- Ranch and two-story homes
- 3 - 5 Bedrooms
- 1,691 to 2,469 Square Feet
- Large lots
- Low taxes with great schools
- Homeowners Association
- Ashdon Builders Energy Advantage
- **HERS** rated home by third party inspector for quality control
- 2-10 Home Buyers Warranty
- One Year Builder Warranty
- Only 10 minutes from Suffolk; within close proximity to most major employment centers, shopping and recreation

### Site Manager:

Jamie Roser 757-404-6636  
jamie@ashdonbuilders.com

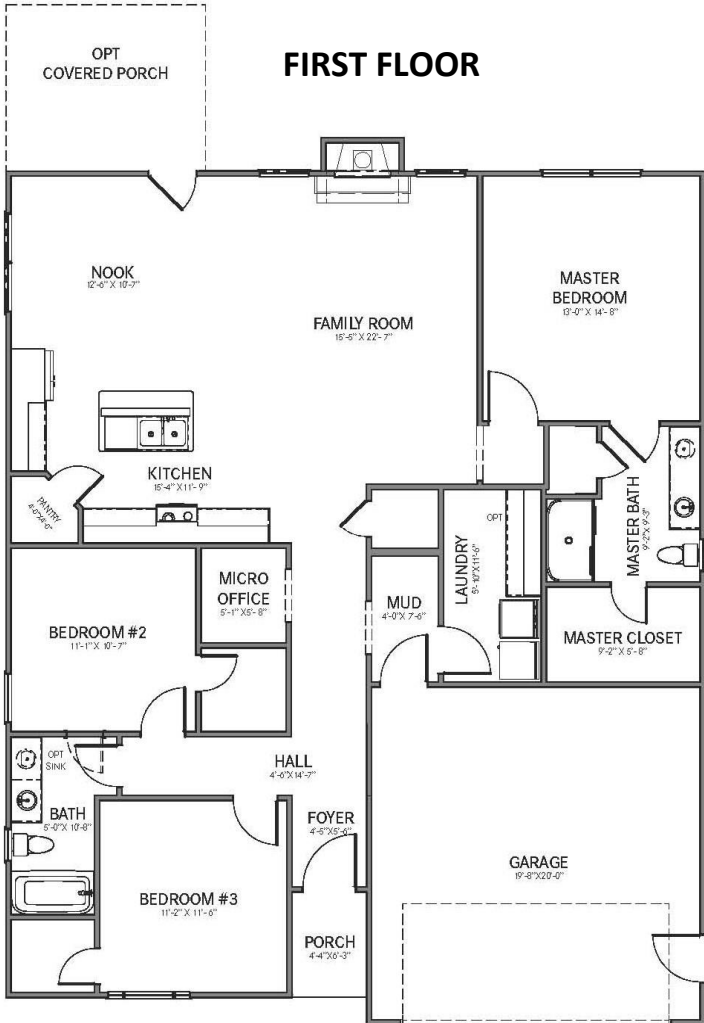
*Ashdon*  
**BUILDERS**  
It's About Living

[ashdonbuilders.com](http://ashdonbuilders.com)

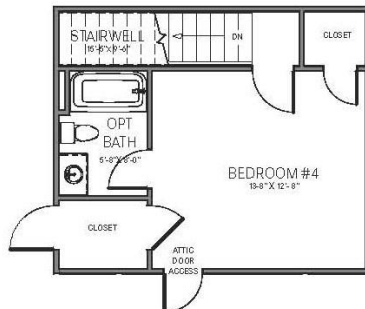
# Holland Meadows Windsor, VA

25278 Kelsie Street, 23487 | Homesite 55

## Sales Price \$319,900\*



### SECOND FLOOR ROG WITH FULL BATH



### Site Manager:

Jamie Roser  
757-404-6636  
jamie@ashdonbuilders.com



ashdonbuilders.com



Builder reserves the right to substitute or make changes in all model types, prices, site plans, floor plans, materials and/or specifications: they are subject to change without notice. Actual home may vary from the renderings and floor plan, the model or other homes. Please see the Site Manager or Site Assistant for details. 6/2019

Shelton  
Farm  
08/06/20