

# The Grand Terre

MODEL G

Bedrooms: 5 | Bathrooms: 2.5 - 3 | Square Feet: 2,382



Grand Terre model with side load garage shown on right side,  
with the Evergreen model on the left side

*Ashdon*  
**BUILDERS**  
It's About Living

[ashdonbuilders.com](http://ashdonbuilders.com)



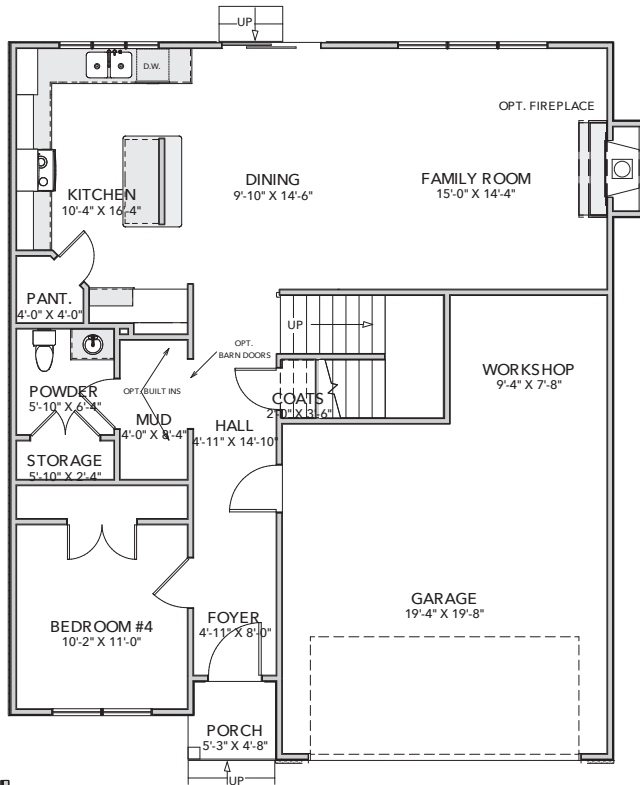
Builder reserves the right to substitute or make changes in all model types, prices, site plans, floor plans, materials and/or specifications: they are subject to change without notice. Actual home may vary from the renderings and floor plan, the model or other homes. Please see the Site Manager or Site Assistant for details. 11-21-19

# The Grand Terre

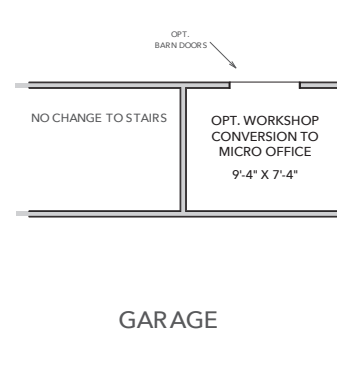
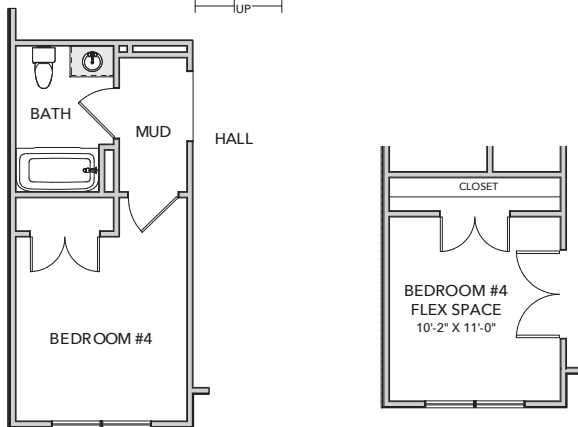
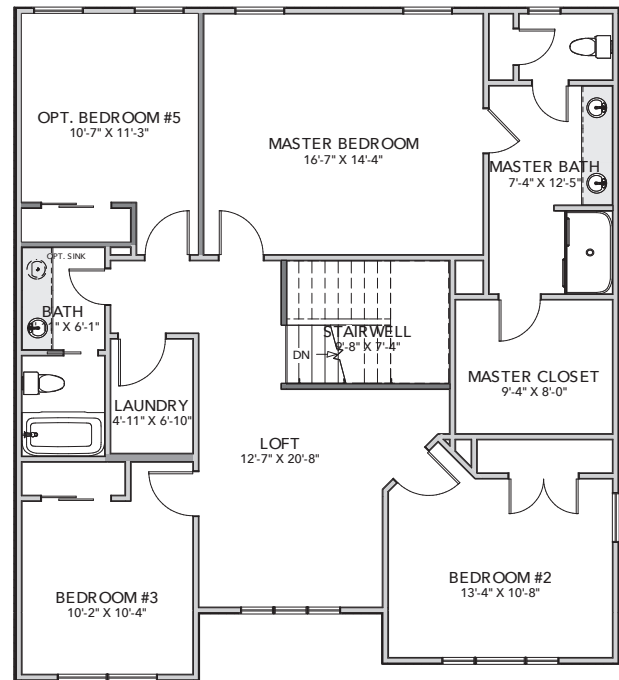
MODEL G

Bedrooms: 4 - 5 | Bathrooms: 2.5 - 3 | Square Feet: 2,382

## FIRST FLOOR



## SECOND FLOOR



Opt. Full Bath Conversion  
at Powder Room

Opt. Office/Living or Dining  
Room with French Doors

Opt. Workshop  
Conversion to Micro Office

*Ashdon*  
**BUILDERS**  
It's About Living

[ashdonbuilders.com](http://ashdonbuilders.com)



Builder reserves the right to substitute or make changes in all model types, prices, site plans, floor plans, materials and/or specifications: they are subject to change without notice. Actual home may vary from the renderings and floor plan, the model or other homes. Please see the Site Manager or Site Assistant for details. 11-25-19