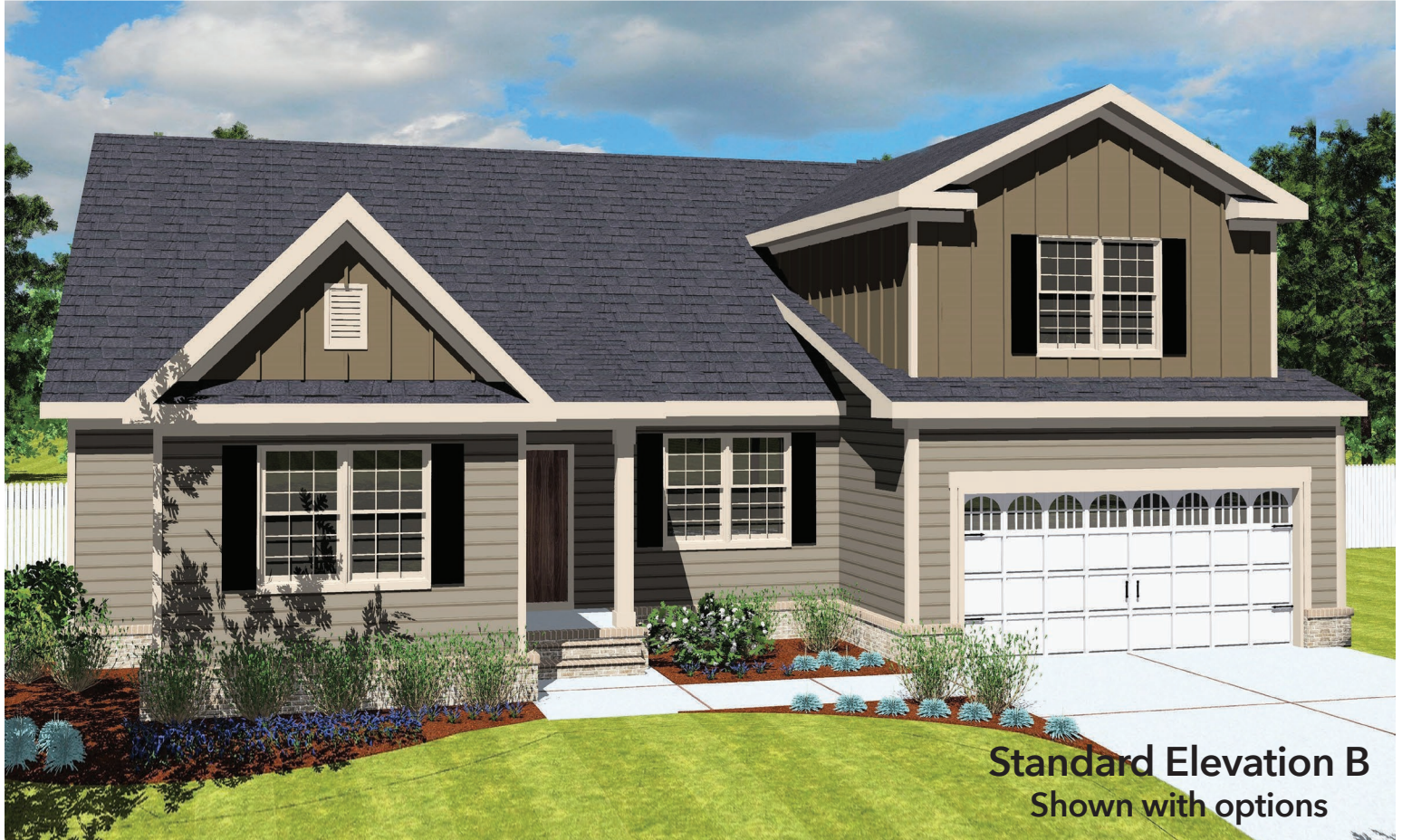


# The St. Croix

MODEL 5000

Bedrooms: 4 - 5 | Bathrooms: 2.5 - 3.5 | Square Feet: 2,300+



**Standard Elevation B**  
Shown with options



**Elevation C**  
Shown with options



**Elevation D**  
Shown with options

*Ashdon*  
**BUILDERS**  
It's About Living

[ashdonbuilders.com](http://ashdonbuilders.com)

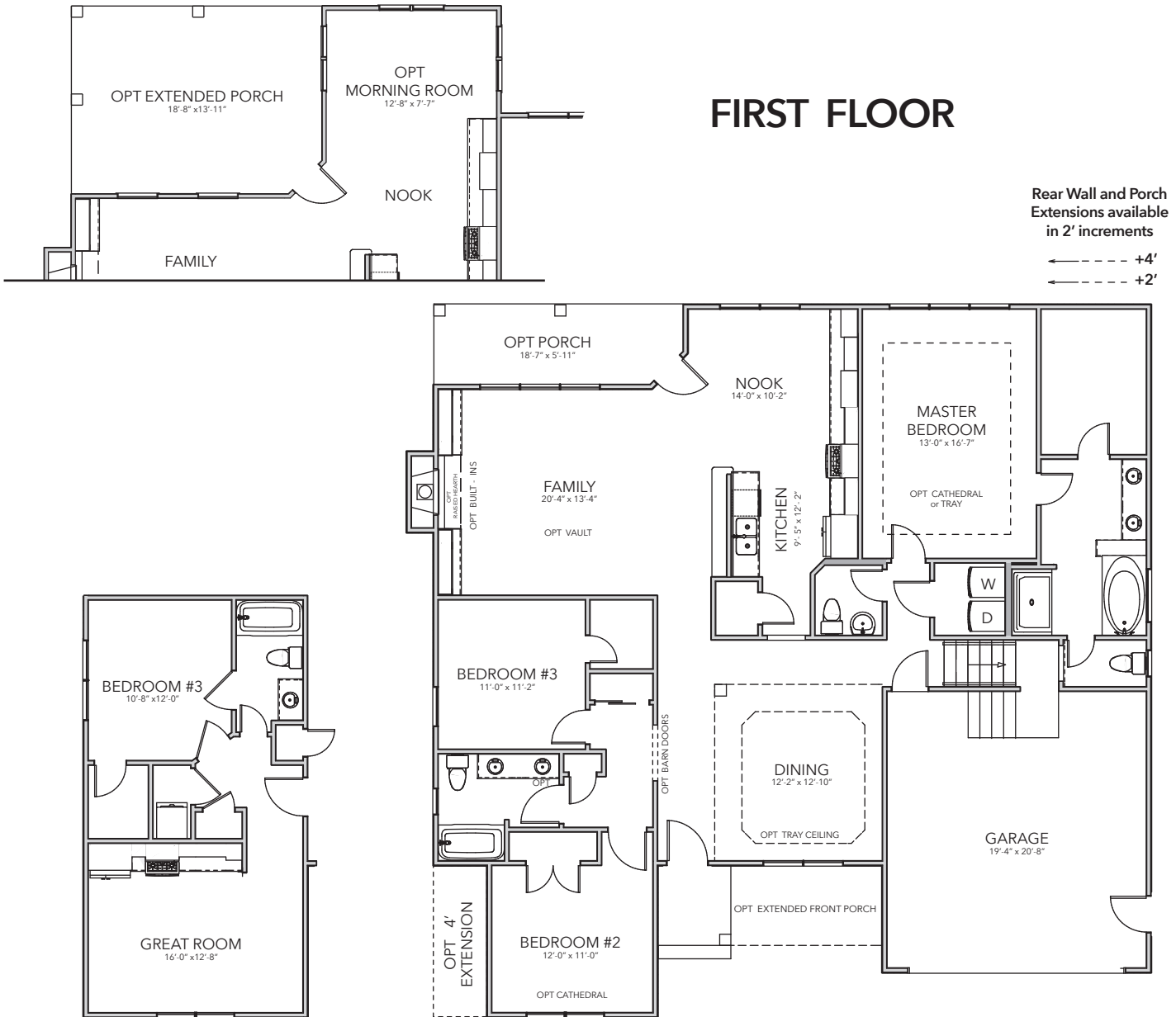


Builder reserves the right to substitute or make changes in all model types, prices, site plans, floor plans, materials, and/or specifications; they are subject to change without notice. Actual home may vary from the renderings, floor plan, model or other homes, and by community. Please see the Site Manager or Site Assistant for details. 01-20 -2020

# The St. Croix

MODEL 5000

Bedrooms: 4 - 5 | Bathrooms: 2.5 - 3.5 | Square Feet: 2,300+



OPT Multi - Generational Suite  
(Shown With OPT Kitchenette)

*Ashdon*  
BUILDERS  
It's About Living

[ashdonbuilders.com](http://ashdonbuilders.com)



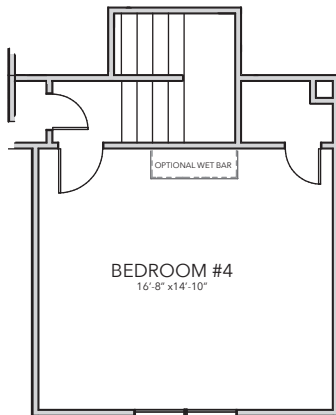
Builder reserves the right to substitute or make changes in all model types, prices, site plans, floor plans, materials, and/or specifications; they are subject to change without notice. Actual home may vary from the renderings, floor plan, model or other homes, and by community. Please see the Site Manager or Site Assistant for details. 01-20 -2020

# The St. Croix

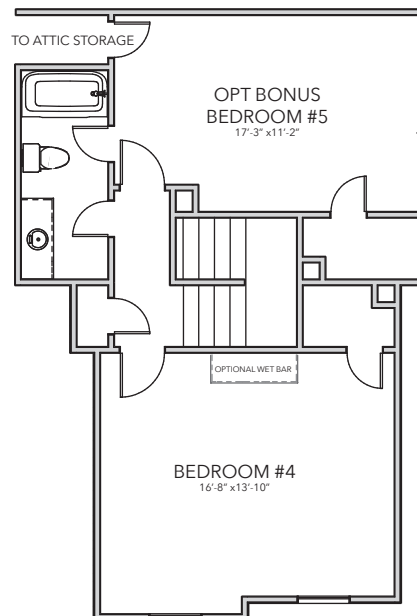
MODEL 5000

Bedrooms: 4 - 5 | Bathrooms: 2.5 - 3.5 | Square Feet: 2,300+

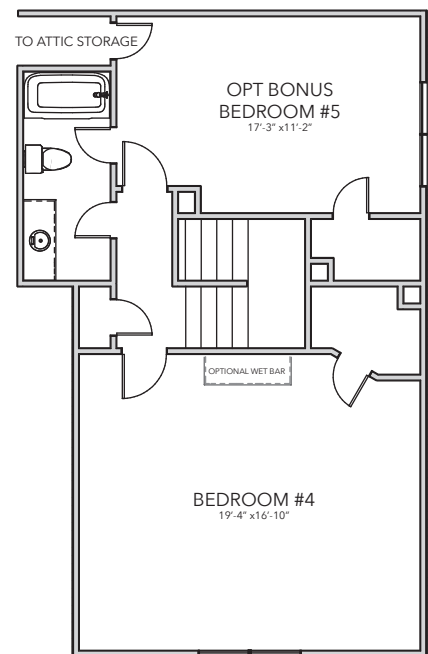
## SECOND FLOOR OPTIONS



Standard Elevation B



OPT Elevation C  
OPT Bedroom #5  
OPT Full Bath



OPT Elevation D  
OPT Bedroom #5  
OPT Full Bath



[ashdonbuilders.com](http://ashdonbuilders.com)



Builder reserves the right to substitute or make changes in all model types, prices, site plans, floor plans, materials, and/or specifications; they are subject to change without notice. Actual home may vary from the renderings, floor plan, model or other homes, and by community. Please see the Site Manager or Site Assistant for details. 01-20-2020