

# The Grand Cayman

MODEL 1A

Bedrooms: 5 - 6 | Bathrooms: 3.5 | Square Feet: 2,918 - 3,369



**Standard Elevation B**  
Shown with options



**Elevation C**  
Shown with options

*Ashdon*  
**BUILDERS**  
It's About Living

[ashdonbuilders.com](http://ashdonbuilders.com)



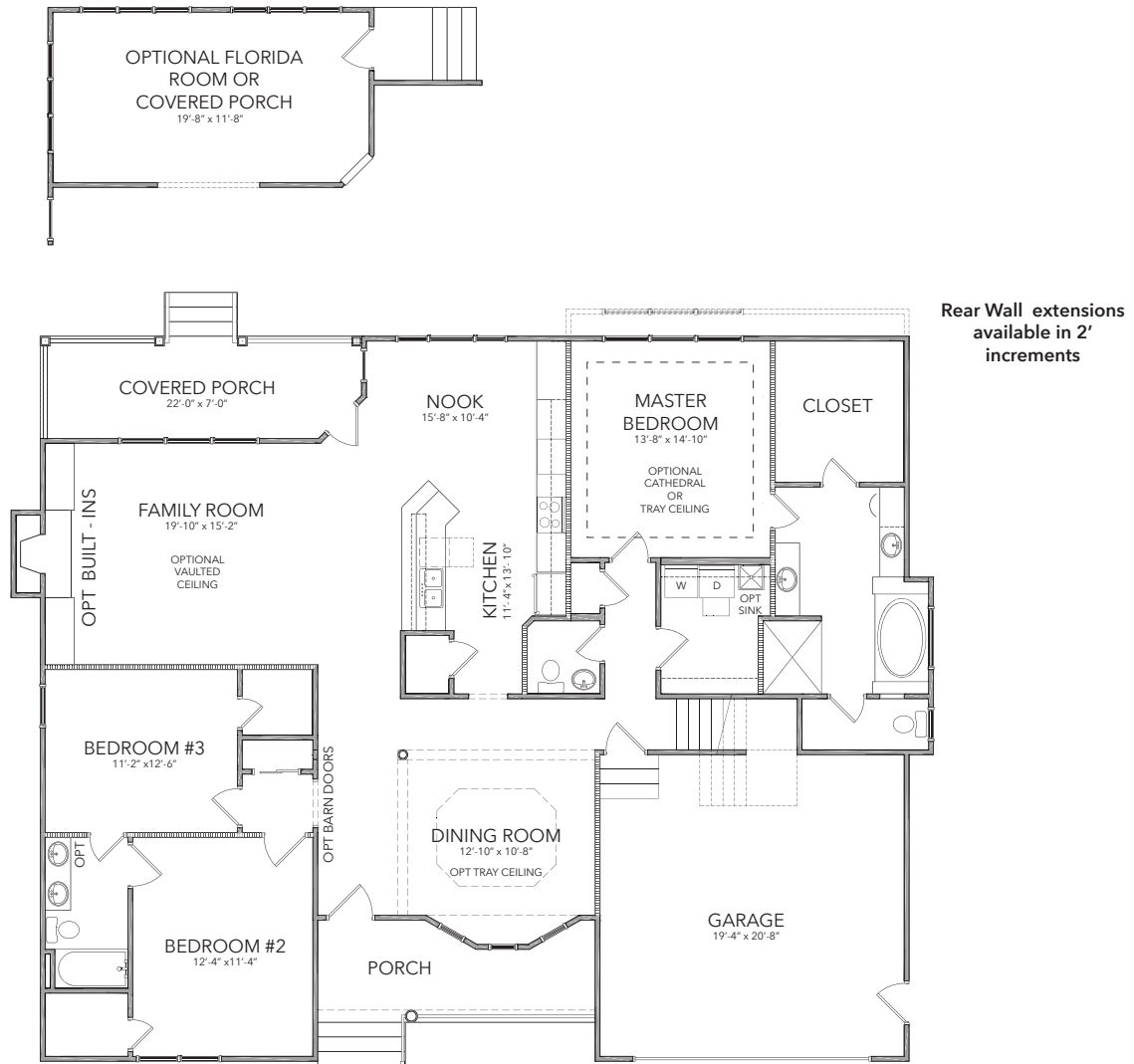
Builder reserves the right to substitute or make changes in all model types, prices, site plans, floor plans, materials, and/or specifications; they are subject to change without notice. Actual home may vary from the renderings, floor plan, model or other homes, and by community. Please see the Site Manager or Site Assistant for details. 01-20-2020

# The Grand Cayman

MODEL 1A

Bedrooms: 5 - 6 | Bathrooms: 3.5 | Square Feet: 2,918 - 3,369

## FIRST FLOOR



*Ashdon*  
BUILDERS  
It's About Living

[ashdonbuilders.com](http://ashdonbuilders.com)



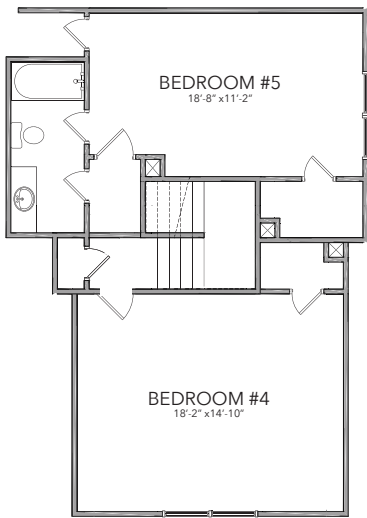
Builder reserves the right to substitute or make changes in all model types, prices, site plans, floor plans, materials, and/or specifications; they are subject to change without notice. Actual home may vary from the renderings, floor plan, model or other homes, and by community. Please see the Site Manager or Site Assistant for details. 01-20-2020

# The Grand Cayman

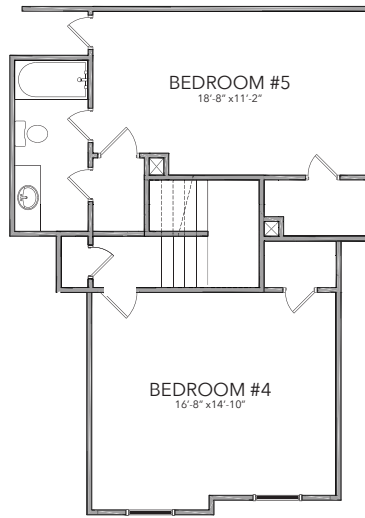
MODEL 1A

Bedrooms: 5 - 6 | Bathrooms: 3.5 | Square Feet: 2,918 - 3,369

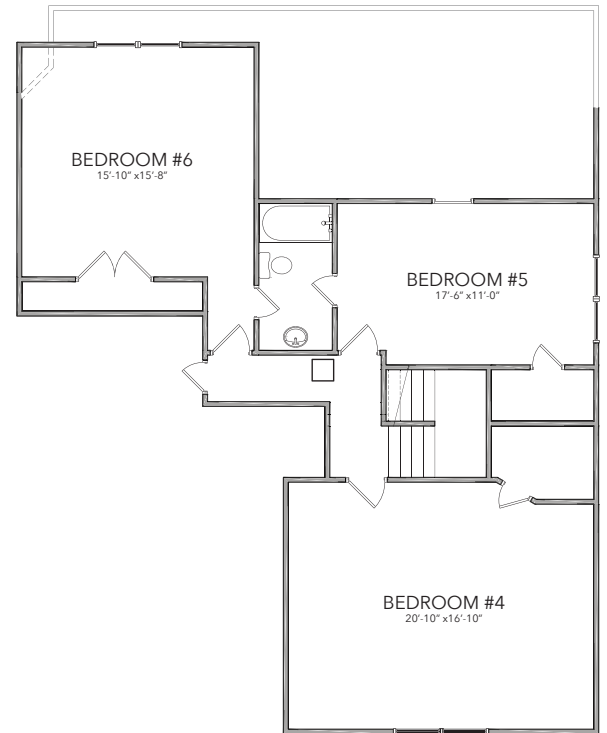
## SECOND FLOOR



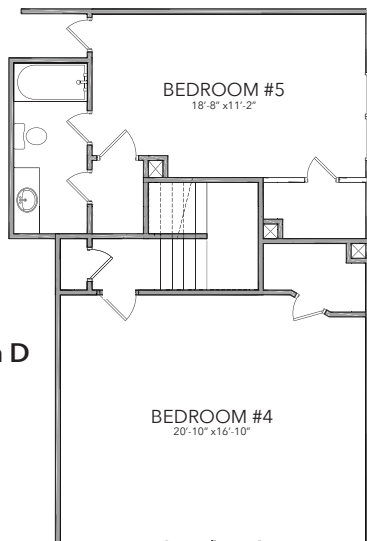
Standard Elevation B



Optional Double Gable Elevation C



Optional 6th Bedroom  
shown on Elevation D



Optional  
Extended Elevation D